



NDIHX-PTZ2 Camera - Lens Hood Installation Guide



Without Hood

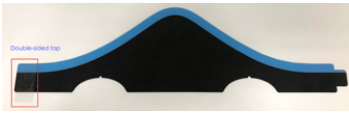


With Hood



There are rare occasions when a light source near the camera enters at such an angle it causes lens glare. If this happens, we have provided an accessory hood that can be installed to remove the glare.

Included in the installation kit:



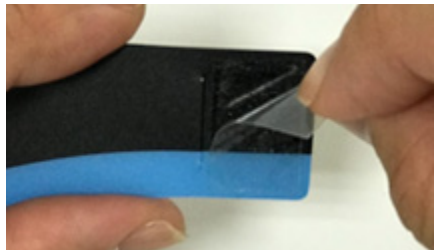
Hood sheet with
double-sided tape edge



Fixing Tape

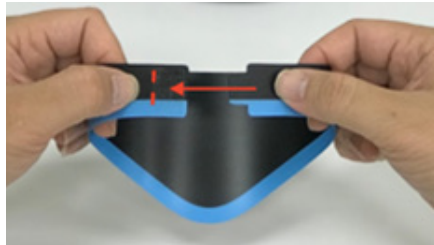
Step 1

Take the hood sheet and remove the double-sided tape from one end using the tab.



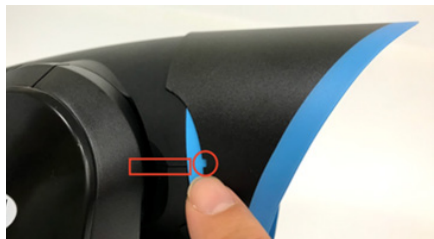
Step 2

Bend the hood, bringing together the ends and inserting the smaller end into the slot to the left of the adhesive area. Once inserted, press firmly to ensure the adhesive sticks.



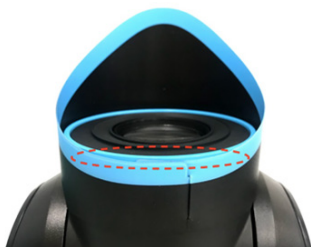
Step 3

To attach the hood, align the notch in the hood to where the upper and lower lens cover meet. Push the hood onto the camera as shown.



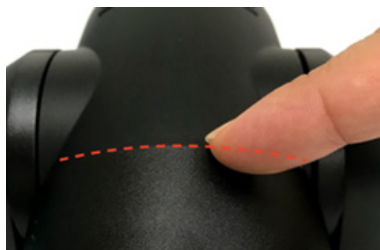
Step 4

Align the bottom edge of the hood to the front of the lens and then move to the top position. Here, align the bottom edge of the hood to the front of the lens and confirm the alignment by looking at the camera from the side.



Step 5

When the hood is in position, place the fixing label on the point where the hood meets the camera casing to ensure a secure fit.



The camera and lens are
now glare free!

